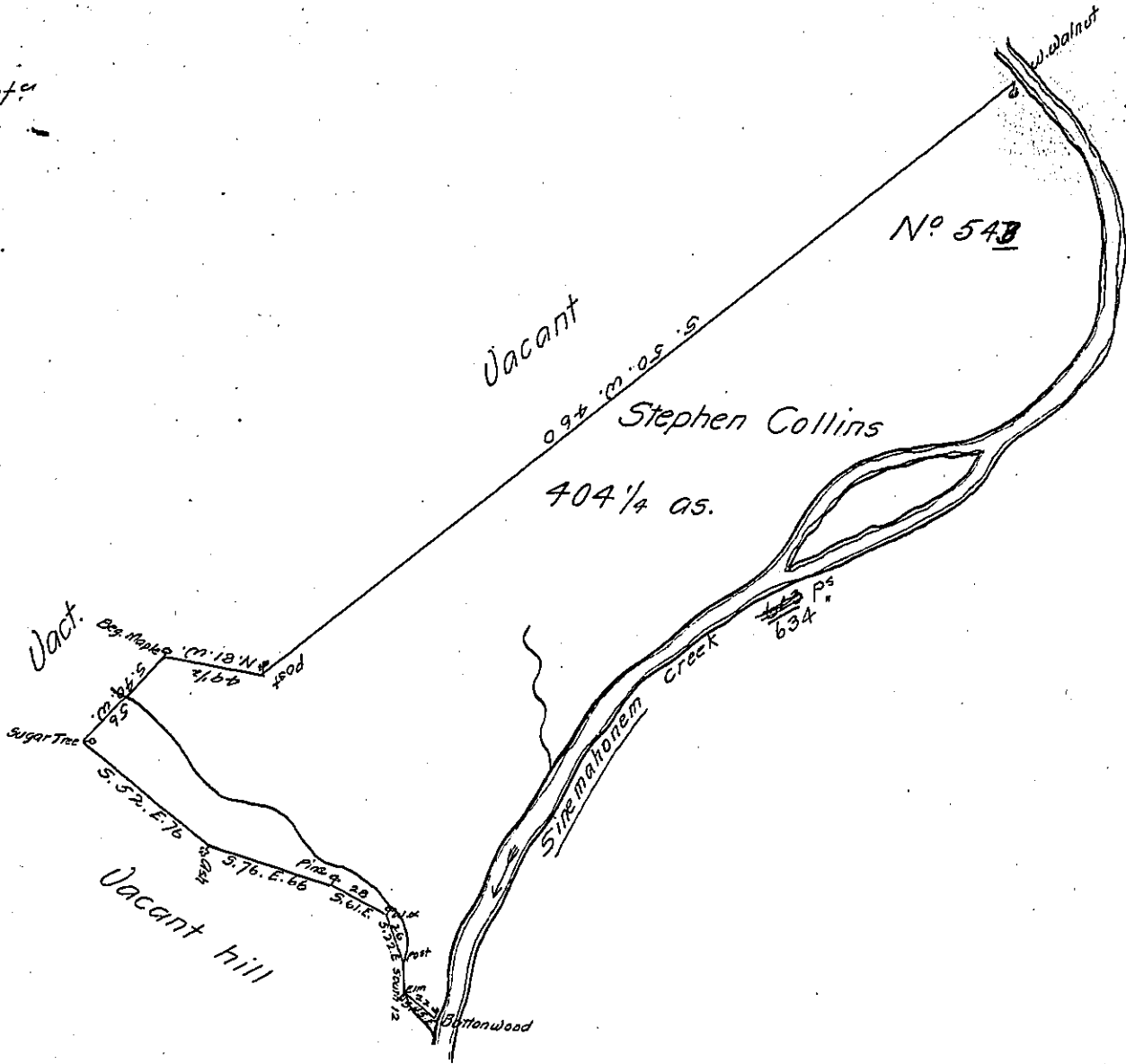


Courses & Dist<sup>s</sup>

- S. 40. W. 56
- S. 52. E. 76
- S. 76. E. 66
- S. 61. E. 28
- S. 22. E. 26
- South 12
- S. 45. E. 22
- N. 12. E. 39
- N. 28. E. 130
- N. 45. E. 37
- N. 58. E. 77
- N. 66. E. 63
- N. 55. E. 40
- N. 32. E. 20
- N. 55. E. 51
- N. 4. E. 124
- N. 66. W. 53 } 634 ps.
- S. 50. W. 460
- N. 81. W. 49 1/2



A Draught of a tract of land Called \_\_\_\_\_ situate on  
 Sinemahonem—in the late purchase in Northumberland County  
 containing four hundred & four acres & one fourth & the usual allowance  
 of six pr. Cent. for roads &c<sup>a</sup> surveyed for Stephen Collins June the  
 27th. 1786 in pursuance of a Warrant from His Excellency the Pres-  
 ident of the Supreme Executive Council Dated the 17th day of May  
 1785 No. 548.

Jas. Harris D.S.

John Lukens Esqr. Surv<sup>r</sup> Genl.

I have Compared the above with the Original Field  
 notes & found it to be accurate

John Canan D.S.

4th. March 1793

IN TESTIMONY that the above is a copy of the original remaining on file in  
 the Department of Internal Affairs of Pennsylvania, made  
 conformably to an Act of Assembly approved the 16th day of  
 February, 1833, I have hereunto set my Hand and caused  
 the Seal of said Department to be affixed at Harrisburg,  
 this twenty-third day of September 1904

*James B. Brown*  
 Secretary of Internal Affairs.